

504411

DATA DISPLAY PRODUCTS (DDP) PROPRIETARY INFORMATION. DO NOT REPRODUCE, COPY, OR USE WITHOUT EXPRESS WRITTEN PERMISSION. COPYRIGHT DATA DISPLAY PRODUCTS.

ELECTRO-OPTICAL CHARACTERISTICS

@ T_a = 25°C

SYM	PARAMETER	X = LED COLOR						UNIT	
		RED	AMBER	GREEN	BLUE	WHITE	WRM WHT		
I _v	TYR. LUMINOUS INTENSITY V/O LENS @ If=20mA	2180	2180	2300	700	2500	1800	mCd	
V _o	OPERATING VOLTAGE RANGE	120	120	120	120	120	120	V	
I _f	TYR. FORWARD CURRENT @ Vf=120V	7.1~7.3						3.7~3.8	mA
I _f	MAX. FORWARD CURRENT @ Vf=130V	8.0	8.0	4.2	4.2	4.2	4.2	mA	
V _{br}	REVERSE BREAKDOWN @ Ir=100µA	-	-	-	-	-	-	V	
λ _{pk}	PEAK WAVELENGTH	634	592	520	465	-	-	nm	
λ _d	DOMINANT WAVELENGTH	629	590	525	470	-	-	nm	

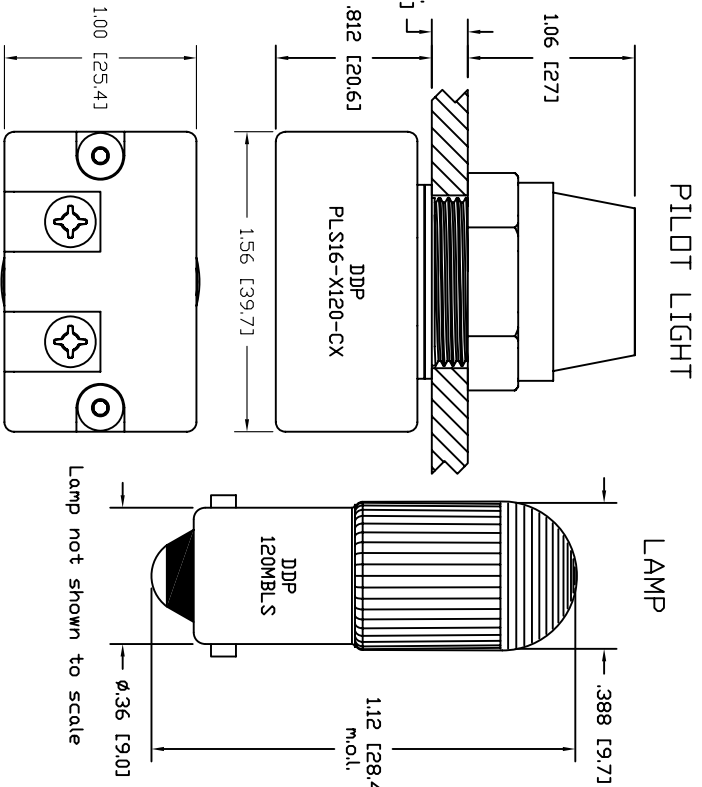
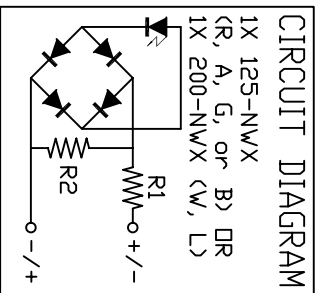
ABSOLUTE MAX. RATINGS T_a=25°C

PARAMETER	VALUE		UNIT
	R & A	G, B, W, L	
POWER DISSIPATION	1040	546	mW
DERATE/°C >T _a	15.6	8.2	mW
OPERATING VOLTAGE	130	130	V
OPERATING TEMPERATURE	-40~+100	-30~+85	°C
STORAGE TEMPERATURE	-40~+100	-40~+100	°C

REMARKS:

1. Dimensions are in inches(mm).
2. The lens is clear-tinted with a Fresnel pattern.
3. This device is immune to peak noise current of 1mA.
4. Caution: GAIN LEDs are class 1 ESD sensitive (MIL-STD-1686). Exceeding absolute maximum ratings may cause damage to, or possibly result in catastrophic failure of these devices. Use appropriate ESD precautions during handling and operation.
5. For white and warm-white LED chromaticity coordinate ranges, see drawings #502590 and #503841 respectively.
6. Install lamp into pilot light before shipping.

REV.	DATE	BY	DESCRIPTION
A	080527	LC	INITIAL RELEASE
-	-	-	-
-	-	-	-
-	-	-	-



Data Display Products

445 S. DUNGLAS ST., EL SEGUNDO, CA 90245 (310)640-0442 FAX: (310)640-7639

DATE: 080527	DRAWN BY: LC	CHECKED BY:	APPROVED BY:
LAST REV. DATE: -	REV. LEVEL: A	MATERIAL THICKNESS:	-

TITLE: PLS16-X120-CX

SCALE: -	TOL: .XX(X) ± .025(.63)	ANGLE: -	DRAWING NUMBER: 504411
----------	-------------------------	----------	------------------------